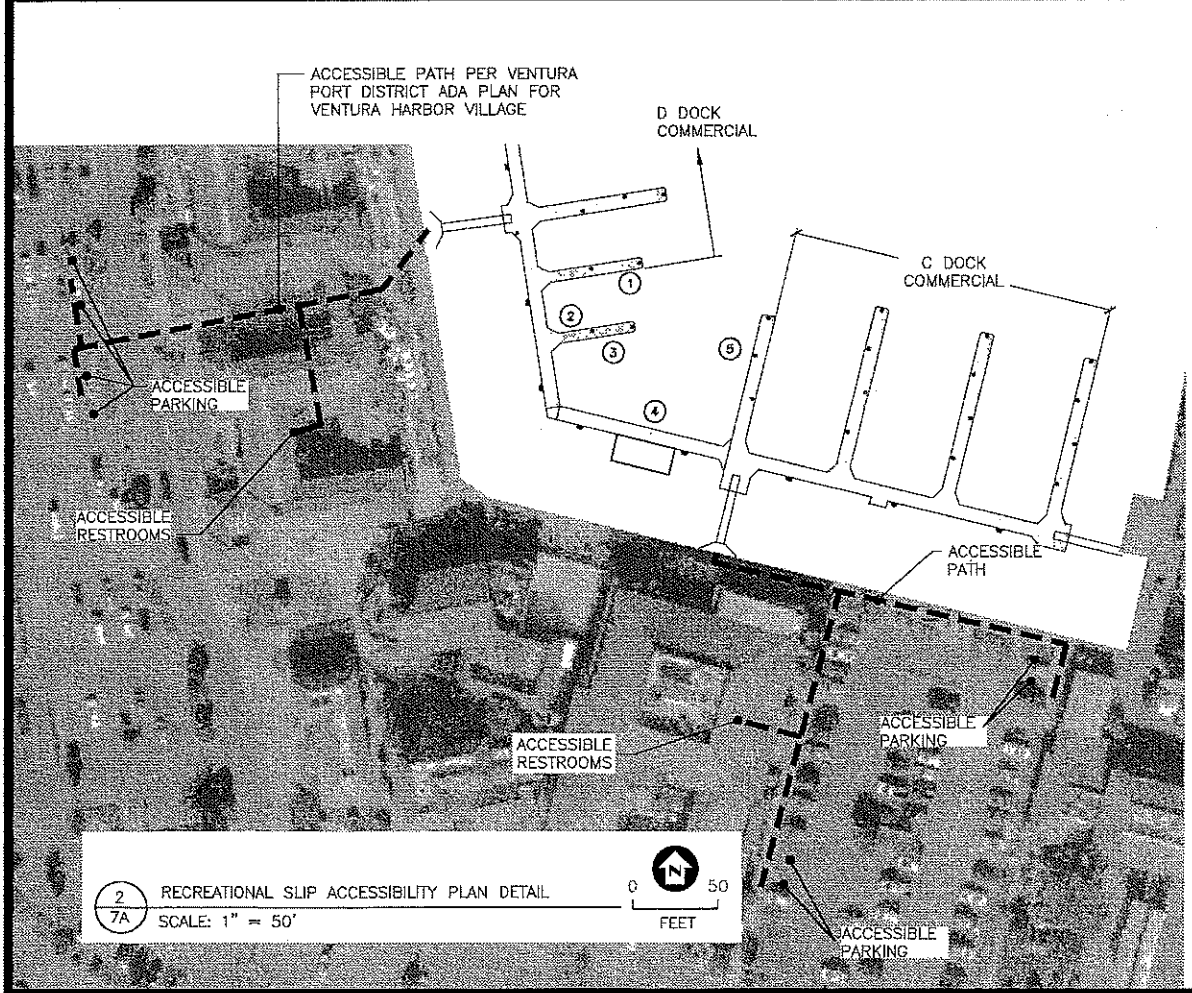


1
7A ACCESSIBLE PLAN
SCALE: 1" = 60'
0 50 FEET



2
7A RECREATIONAL SLIP ACCESSIBILITY PLAN DETAIL
SCALE: 1" = 50'
0 50 FEET

RECREATIONAL SLIP SCHEDULE

SLIP NO.	LENGTH
①	60'
②	50'
③	50'
④	RENTAL CONCESSION
⑤	80'

ALL GANGWAYS ARE 40' LONG. SEE ACCESSIBILITY NOTE NO. 2 THIS SHEET.

ACCESSIBILITY NOTES:

1. THE PROJECT CONSISTS OF REPLACEMENT OF 36 COMMERCIAL FISHING SLIPS THAT RANGE IN LENGTH FROM 60 TO 100 FEET. FIVE (5) ADDITIONAL SLIPS ARE PROVIDED FOR TRANSIENT RECREATIONAL USE AND RENTAL OF SMALL PADDLE CRAFT.
2. EXISTING GANGWAYS ARE 40' LONG, AND THERE WILL BE LESS THAN 25 RECREATIONAL BOAT SLIPS, THEREFORE AND IN ACCORDANCE WITH EXCEPTION NO. 4 OF SECTION 1003.2.1 OF THE DOJ'S ADA 2010 STANDARDS, THE EXISTING GANGWAYS ARE ADEQUATE AND SHALL NOT BE REQUIRED TO COMPLY WITH THE PROVISIONS OF SECTION 405.2.
3. EXISTING ACCESSIBLE PATHS ARE COMPLIANT PER VENTURA PORT DISTRICT'S APPROVED ADA PLAN



NOBLE CONSULTANTS **GEC**
2201 DUPONT DRIVE, SUITE 030
IRVINE, CA 92612
949-752-1530
949-752-0301 (FAX)

NO.	DATE	REVISION

DESIGNED BY: JTM
DRAWN BY: JM
CHECKED BY: TUF
APPROV. BY: JTM

VENTURA PORT DISTRICT
ACCESSIBLE PLAN
VENTURA HARBOR VILLAGE COMMERCIAL DOCKS REPLACEMENT

FOR PLAN CHECK
SHEET 7A OF 77
JOB NO. 887-17
SCALE AS SHOWN
DATE 2/22/2019